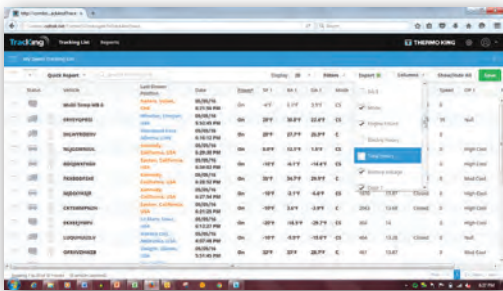
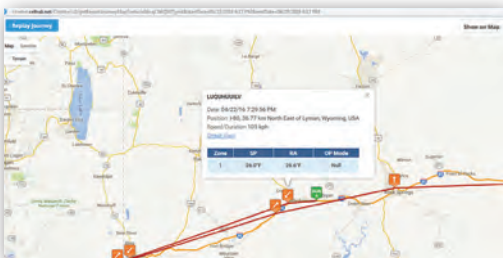


# TempuTrak

THE SIMPLE TEMPERATURE MANAGEMENT SOLUTION FOR DIRECT-DRIVE TRUCKS, HEATERS AND NON-THERMO KING REFRIGERATED UNITS.



MANAGE TEMPERATURE AND DOOR OPENINGS ON A CUSTOMIZABLE PAGE



TRACK YOUR ASSET LOCATION AND MOVEMENT IN REAL TIME

*Thermo King's TempuTrak solution uses GPS-based telematics to provide real-time temperature monitoring—helping you keep track of your refrigerated assets and perishable cargo with enhanced reliability.*

- TempuTrak is a stand-alone tracking device that tracks temperature, door openings, asset location and speed
- Operates independently of the reefer controller
- Monitor Thermo King refrigerated trailers, trucks, direct-drive vans, and heaters
- Monitor non-Thermo King refrigerated assets
- Monitor TempuTrak, TrailerTrak and TrackKing on one website
- Up to 3 independent temp sensors and 1 door sensor
- Automatic notifications of trailer entry, exit and movement in geo-fences
- Reads reefer ignition status
- Rechargeable internal battery and internal antenna
- Temperature and door alarms
- Default reporting times of 15 mins when the refrigeration unit is powered ON and 6 hours when powered OFF
- Poll unit for data when the reefer power is ON
- Easy plug and play installation
- LED display on box for diagnostics
- Easily programmable over-the-air software with no disruptions to operations



*SMALL TRUCK APPLICATIONS*



*HEATER APPLICATIONS*



*VAN APPLICATIONS*

## *PRODUCT FEATURES*

**Real-Time Temperature Sensing:** The system's temperature sensor measures the temperature of the load area in real (up to three temperatures).

**Door Openings:** The system's door sensor monitors the movement of the door. A door that is left open for an extended period could compromise the temperature of the cargo. Also, doors that are opened at an unauthorized time could indicate a security issue.

**Time and Location Tracking:** These tracking details allow you to match temperature with time/location so that temperature monitoring

issues can be addressed quickly to prevent spoilage. Real-time time and location tracking also helps expedite the recovery process in the event of a lost or stolen asset.

**Geofencing:** This feature allows you to define boundaries around specific areas that trigger automatic notifications when vehicles or

trailers enter or leave the areas, eliminating unauthorised truck/trailer movements.

**Real-Time Alarms:** The fleet manager can configure an alarm notification when:

- The door opens/closes or remains open for an extended period
- The load area goes outside the temperature range for a certain amount of time
- The trailer goes outside the geofence
- The heating or cooling unit is turned on/off
- There's a fault triggered by the heating/cooling unit

Anyone with an email address, including the fleet manager, customer or driver, can receive alarm notifications. When a temperature alarm is sent to the driver, he or she can pull over immediately and address the issue. With automatic alarms, managers don't have to monitor the system all the time, which is especially beneficial when managing large fleets.

**Online Access 24/7:** Access real-time data about your asset or cargo using the Tracking website.

### *SOPHISTICATED REPORTING:*

- Scheduled reports may be provided to multiple stakeholders within an organization
- Reports may be customised to suit the end user's needs
- Typical reports may contain historical alarm and temperature data
- Utilization reports ensure that costly refrigerated assets are being used to their full potential and within their designated service area